

Human VEGFR2 Protein; hFc Tag

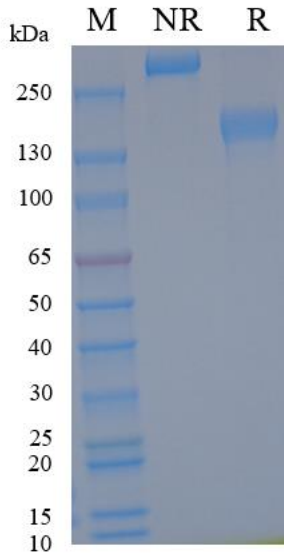
Product Information

Product Name	Human VEGFR2 Protein; hFc Tag
Storage temp.	Store at $\leq -70^{\circ}\text{C}$, stable for 6 months after receipt. Recommend to aliquot the protein into smaller quantities for optimal storage. Please minimize freeze-thaw cycles.
Catalog# / Size	GM-88069RP-100 / 100 μg GM-88069RP-1000 / 1 mg

Protein Information

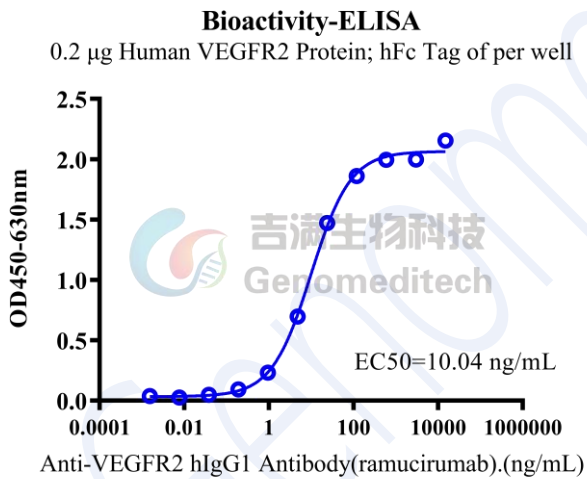
Alternative Names	KDR,CD309,FLK1,VEGF R2
Source	Human VEGFR2 Protein; hFc Tag (GM-88069RP) is expressed from human 293 cells (HEK-293). It contains AA Ala 20 – Glu 764 (Accession # P35968-1). This protein carries a hFc tag at the C-terminus.
Purity	> 95% as determined by SDS-PAGE
Endotoxin	< 1 EU/ μg , determined by LAL gel clotting assay
Predicted Mol Mass	109.0 KDa
Formulation	Supplied as a 0.2 μm filtered solution of PBS, pH7.2-7.4.
Description	VEGFR2 (Vascular Endothelial Growth Factor Receptor 2) is a key tyrosine kinase receptor in vascular endothelial cells. It binds to VEGF, activating pathways like PI3K/AKT and MAPK to regulate angiogenesis, vascular permeability, cell proliferation, and migration. VEGFR2 is crucial for embryonic development and tumor growth, with abnormal expression linked to tumor angiogenesis and invasion, making it a key anti-angiogenesis target. Composed of extracellular, transmembrane, and intracellular domains, VEGFR2 shows abnormal expression in conditions like cancer and ocular diseases. Targeted inhibitors, such as tyrosine kinase inhibitors and antibody drugs, are widely used in clinical therapies, marking VEGFR2 as a focus for cancer and anti-angiogenesis drug research.

SDS-PAGE

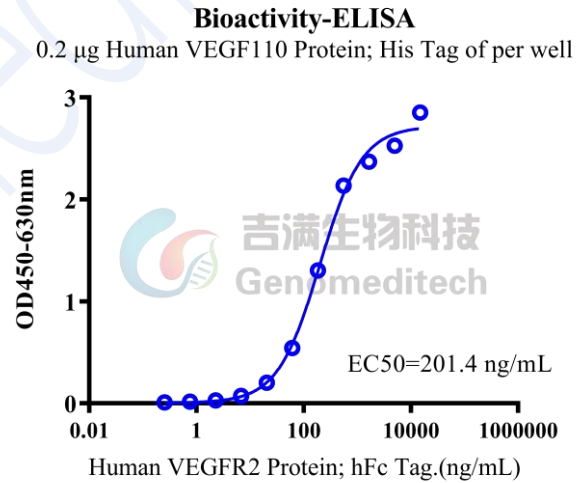


On SDS-PAGE under non-reducing (NR) condition and reducing (R) condition. The gel was stained overnight with Coomassie Blue. The purity of the protein is greater than 95%.

Bioactivity-ELISA



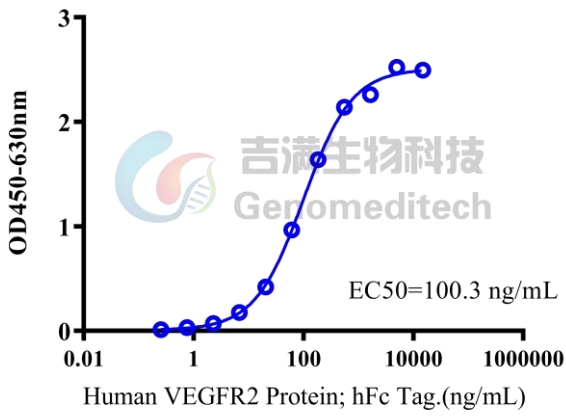
Human VEGFR2 Protein; hFc Tag (Catalog # GM-88069RP) was immobilized at 2 µg/ml (100 µL/well). Increasing concentrations of Anti-VEGFR2 hIgG1 Antibody (ramucirumab) (Catalog # GM-80717AB) were added.



Human VEGF110 Protein; His Tag (Catalog # GM-88070RP) was immobilized at 2 µg/ml (100 µL/well). Increasing concentrations of Human VEGFR2 Protein; hFc Tag (Catalog # GM-88069RP) were added.

Bioactivity-ELISA

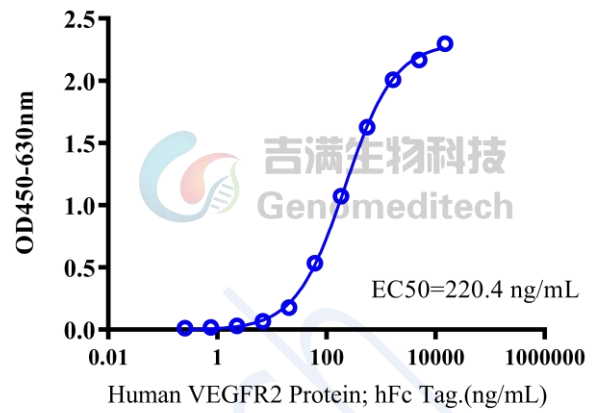
0.2 μ g Human VEGF121 Protein; His Tag of per well



Human VEGF121 Protein; His Tag (Catalog # GM-88071RP) was immobilized at 2 μ g/ml (100 μ L/well). Increasing concentrations of Human VEGFR2 Protein; hFc Tag (Catalog # GM-88069RP) were added.

Bioactivity-ELISA

0.2 μ g Human VEGF165 Protein; His Tag of per well



Human VEGF165 Protein; His Tag (Catalog # GM-88072RP) was immobilized at 2 μ g/ml (100 μ L/well). Increasing concentrations of Human VEGFR2 Protein; hFc Tag (Catalog # GM-88069RP) were added.